

# Yalding St Peter and St Paul CofE Primary School



A Presentation on behalf of Yalding Primary School

# About

- Very popular Church Of England Primary School
- 163 Pupils on roll in September 2016
- Reception intake is 24 children every September
- Sometimes additional children are accepted after successful appeals
- Always over subscribed



# About

- Waiting list places held for other year groups
- 6 Classrooms serving 7 year groups
- No year 5 Class
- High maintenance Victorian Building built for very different times and very different requirements.



# Present Issues

- School hall serves as
  - Canteen
  - Assembly hall
  - Gym
  - Theatre

But is woefully small and inadequate

- Victorian classrooms would benefit from expansion to provide more learning space for the children

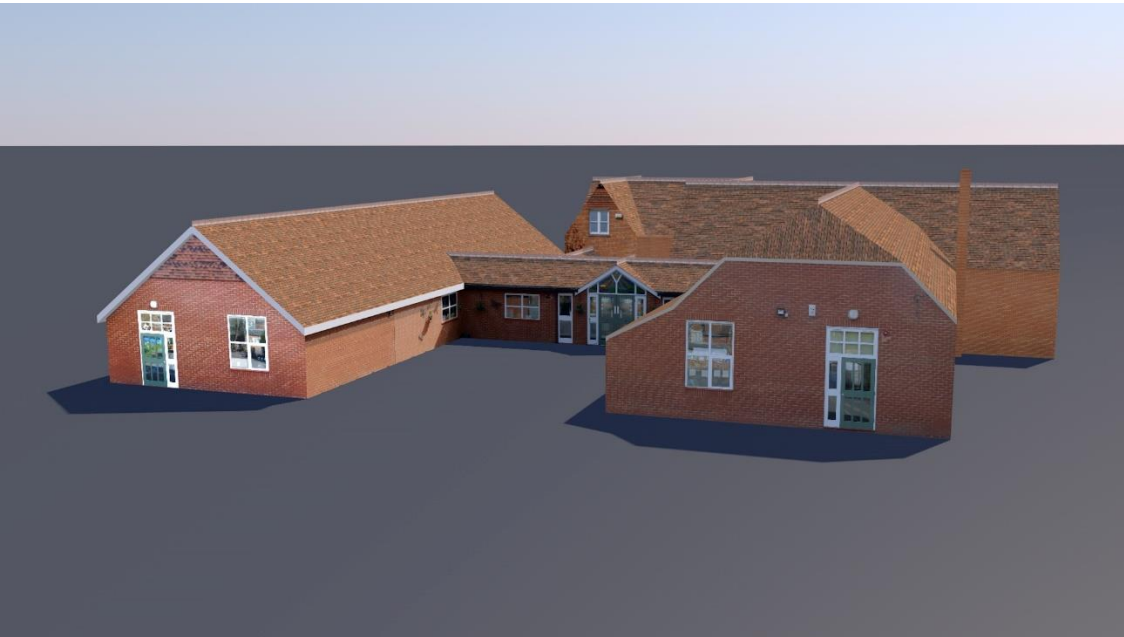
# Opportunities

- In order to maintain the school's excellent status, the school needs to expand in size
- In order to meet the future needs of the village, the school needs to plan how it could support additional children
- All improvements are prohibitively expensive and take time

# Our Vision

- A new school hall
  - To provide suitable facilities for current pupils
  - To meet the needs of future pupils
  - The Governors and PTA have formed a fund raising committee to raise money
  - Limited Funding opportunities from Kent County Council or DfE
- Improved reception and Year 1 classroom facilities
  - See Above
- Subject to a need arising through housing development
  - An additional classroom would be needed
  - A preference for no combined classes with mixed year groups

# New School Hall- Artist impression



# Summary

- The Governors are continually exploring opportunities to support the Headteacher and staff to take the school forward
- We want to plan for any future opportunities/challenges that local development would bring
- We look forward to the support of the Parish Council on developing our school
- Plans need to be developed now to ensure we meet the needs of our current children and the village community in the future